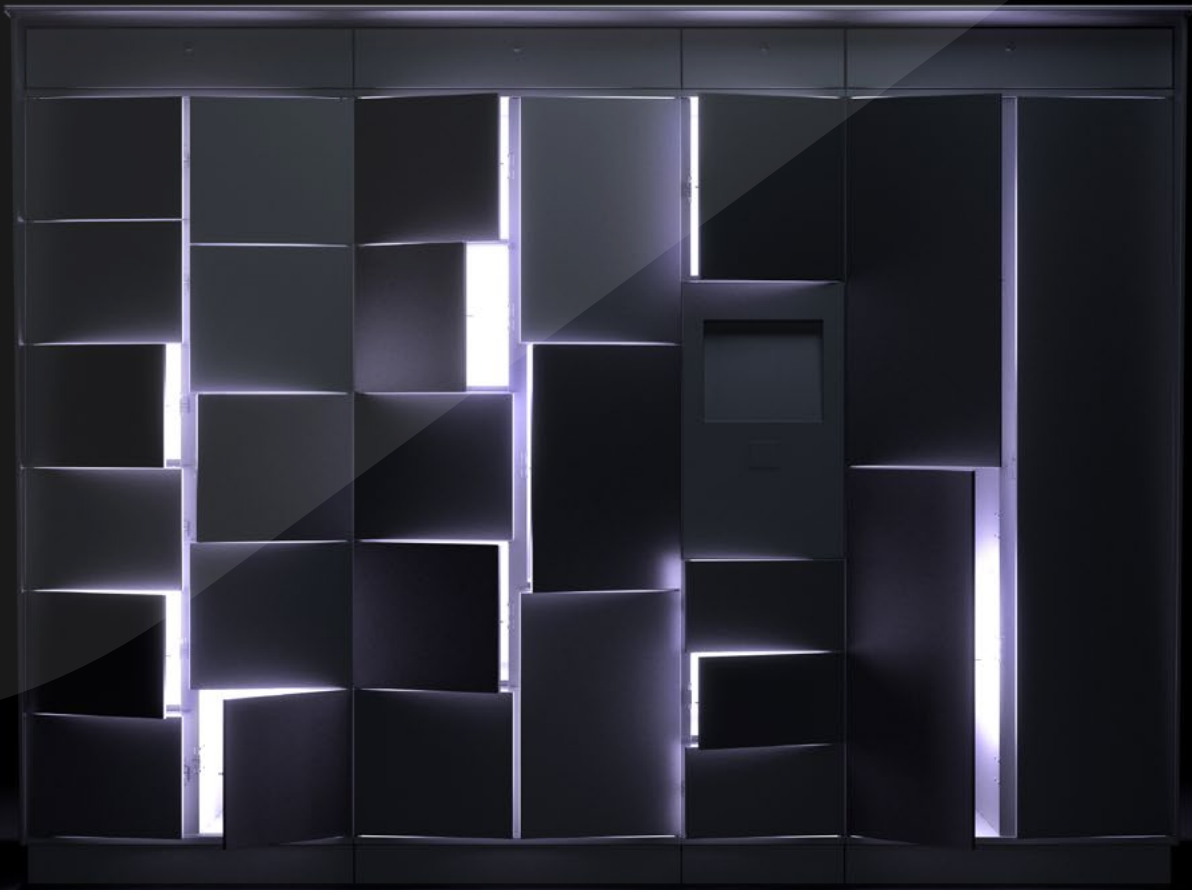




Your doorway to a
world of magical efficiency
C + P SmartLocker.



Open sesame!



A world where keys have lost their meaning. A compartment that opens precisely when its time has come. Objects appearing behind one door yesterday, and a different door tomorrow. It seems like magic, but—like in any other stage show—it's actually ingenious technology. Our SmartLockers' seemingly impossible feats are unlike conventional magic tricks in one important way, however: they are not primarily designed to trick or to entertain. Their goal is to make workflows in your company smarter and more efficient. So that you can save time, space, and money. So that you and your team can concentrate on the work at hand. And so that cabinets stop being passive storage places and start to play an active role in how you organize things. And while we're at it, why not have a little fun as well? Ladies and Gentlemen, a round of applause for the new C + P SmartLocker...

Over 150 million possibilities

Do you need a configuration that isn't shown here?
Is your favorite color not included in our list? Whatever
you need, just ask us. The C + P team looks forwarding
to receiving your call:

+49 (0)6465 919-350

Terminal



Display side
One-piece

Display front
One-piece

Display front
Two-piece

Indoor



01

02

03

Outdoor



Display Front



05



06



07

Compartment layout

Model	Compartment size	Door heights in mm	Number
Display front, one-piece			
	S	222	6
	M-display	297	1
Display front, two-piece			
	XL	897	2
	S	222	6
	M-display	297	1
01			
	XS	147	12
	S	222	8
02			
	S/M	297	6
	M/S	357	5
03			
	M	447	4
	L	597	3
04			
	XL	897	2
	XXL	1,797	1
05			
	M/S	357	10
06			
	M	447	8
07			
	L	597	6
08			
	XS	147	16
	S/M	297	4
09			
	XL	897	2
	M	447	2
	XS	147	6

Color selection



White
VK 001



Traffic white
RAL 9016



Light gray
RAL 7035



Silver gray
VK 002



Steel gray
RAL 0005000



Anthracite gray
RAL 7016



Black
VK008



Black gray
RAL 7021



Jet black
RAL 9005



Danube maple
VK 030



Oyster white
RAL 1013



Light ivory
RAL 1015



Sen Ash
VK 031



Golden yellow
RAL 1004



Traffic yellow
RAL 1023



Sereno oak
VK 032



Pure orange
RAL 2004



Traffic red
RAL 3020



Natural silver spruce
VK 039



Flame red
RAL 3000



Ruby red
RAL 3003



Birch gray
VK 0741



Light pink
RAL 3015



Gentian blue
RAL 5010



Light blue
RAL 5012



Distant blue
RAL 5023



Architectural blue
RAL 240 60 15



Reseda green
RAL 6011



Pastel green
RAL 6019



Pure green
RAL 6037



Clown green
RAL 110 80 60



04



08



09

Contents:

06

Always showtime:
A C + P SmartLocker
talks about its life.

10

Focus pocus:
C + P SmartLockers are
highly efficient.

13

Flex-hex:
C + P SmartLockers
are highly flexible.

14

Abracadabra:
C + P SmartLockers are
extremely versatile.

17

Works like magic:
C + P SmartLockers are
carefully thought out.

18

Encore:
for all those who
want even more.

20

The great magician:
Prefino S 7000.

22

The master's apprentice:
Evolvo S 3000.

25

FAQ about
C + P SmartLockers.

26

What seems effortless
is the product of
years of experience.

Always showtime:

A C + P SmartLocker talks about its job.

Hi, I'm Prefino. S 7000, to be precise. I work for a real estate company with approximately 200 employees and 150 properties in and around Berlin. Business is good. And, if I say so myself, that's partly thanks to me. Would you like to find out why? Here's a little selection of what I did yesterday (not everything, as that would take forever).

4:58 a.m.

Daybreak. The cleaning team approaches. I give Ms. L. the high-quality industrial vacuum cleaner from compartment 75. The boss insists on it—they have no idea how expensive these things are. The last model disappeared from the cleaning room before I arrived here. Now that won't be happening again. I have other XXL compartments, for example no. 68. The Head of Sales always has his golf clubs put here to test them out. And puts them straight back in to be returned if they don't have a good swing.

6:03 a.m.

The emergency technicians are coming in from the night shift. I let them use compartments 80 to 90 for their tools. Mr. W. uses my terminal to input that the angle grinder in compartment 83 is defective. I block it straight away and send a message to the facility manager. I'll give the morning shift worker a fully functioning replacement tool. The drill in compartment 81 is missing. Mr. P. can be very forgetful. I block him from leaving the building. That should remind him.



Once C + P SmartLockers are in use, it's hard to imagine life without them

8:42 a.m.

The first office workers are here. I give each of them a free sandwich from compartment 32. But only between 8:45 and 9:00. After that, the compartment can only be opened by the cafeteria cook. She takes the remaining sandwiches to sell throughout the day. You might be wondering why they do this. It was an idea the Head of HR came up with to motivate people, because they kept turning up to work late. Promoting good behavior with snacks. It seems to have worked.

9:11 a.m.

Now it's time for the laptops to be handed out. Since Covid, almost 50% of the team work from home on any given day. Always different people, of course, so that it's fair. They use their own devices at home. This means the boss only needs half as many company laptops. And half the cabinet space. I'm also in charge of the handover, of course, in compartments 1 to 30, which I allocate to different people each time.

11:37 a.m.

Things are really hectic today, with all kinds of keys and documents passing through my compartments. It's ironic, actually: I don't need any keys myself, but I'm always looking after other people's. A task that I take very seriously, of course. All of my compartments are practically impossible to open with force, as there's nowhere for tools to get a hold. And they don't have a lock that can be accessed from the outside. But I do have a very attentive camera and I can issue a warning to raise the alarm.



1:04 p.m.

Mr. B. has come for a meeting. He is a particularly important customer, who has already bought two of our most expensive commercial properties. A special compartment is reserved for him (no. 77) where he can store his coat—and also his umbrella, which he has with him whatever the weather. He always has very important things in his coat pockets, and would never trust a coat rack. This time he didn't have his PIN on hand. As an alternative, I let him use an app. And just like that, it's open. He's very impressed.

2:22 p.m.

The meeting seems to have been a success—the boss comes and gets me to open compartment 45. It is temperature-controlled to precisely 12 °F and contains twenty 500 ml tubs of ice cream from a small and exclusive artisan producer. This is the same temperature that ice-cream parlors use to ensure that their specialties are kept cool but remain creamy and ready to eat. Ice cream for everyone! The boss is in a generous mood, because he's had some good news. Compartment 46 is also chilled and can be used for special staff medicines.

3:49 p.m.

Well this was unexpected! Someone I've never seen before is meddling with compartment 93 with a crowbar. He shouldn't have done that. I retaliate immediately and send an alarm message to the administrator—who's built like a refrigerator, and fast as well. He arrives in 27 seconds and gets the intruder in a headlock. He was already in quite a state, because he had a tough time with my steel—and I've got him on video.

5:30 p.m.

The workers from the office next-door are going home and have come to get their valuables from my compartments 100 to 120. The boss kindly decided to let them do this. For good relationships. Not for free, though. The compartments are leased. Every time they're opened, I take one euro of credit from the other company's account and pay it into ours. This means that a compartment can pay for itself in a couple of months, and then actually make a profit.



Looks like a wall unit, but it's an asset to any company

6:15 p.m.

At the end of the day, of all times, there's a power failure in the building, and there are still some people here who have stored their things in me. But for me, this is easily dealt with. The building technician comes with a special tool and a ladder and operates the mechanism on my top. All the compartments in a particular row spring open and release their valuable contents. This is one of my exclusive tricks, if I say so myself.

So, that's enough for now. I hope you've been given some idea of all the things a C + P SmartLocker can do. The following pages provide more details.





Unlike other cabinets, a C + P SmartLocker is always busy

Focus pocus:

C + P SmartLockers are highly efficient.

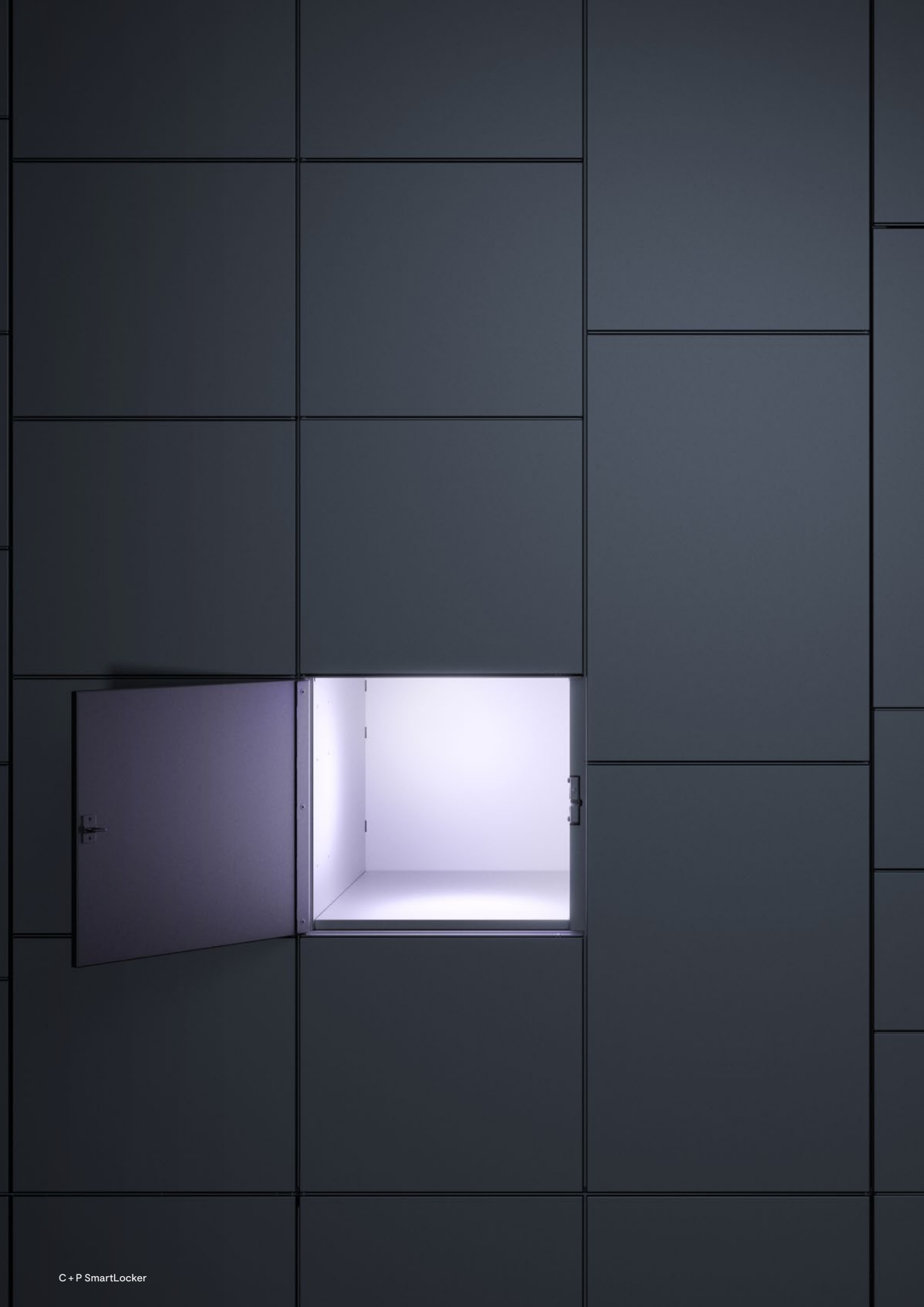
Time is money. And too much of both is always wasted on things that could have been avoided. For example, handing over laptops or other technical devices to staff. Or replacing a lock because someone has lost the key. Or because an employee has been handed a defective tool and can't do anything with it. Or for the maintenance of a mechanical lock system, because some of the locks have worn down through repeated use. The list is almost endless. What all these issues have in common: with a C + P SmartLocker, they would not have happened.



Where are all the tools? Tidied away perfectly: SmartLockers in factories, workshops, etc.

Magic number 7—your advantages at a glance:

- + Lower costs: no need to purchase a compartment for every single staff member
- + Productivity: the usual complications of lost keys etc. are no longer a problem
- + Save time: no more complicated and distracting handovers
- + Support: cabinets make intelligent decisions that make work easier
- + Low-maintenance: special surfaces for quick and easy cleaning
- + Source of income: compartments can earn money for you with a pay/rent function
- + Compatibility: C + P SmartLockers can be connected to all kinds of networks





Flex-hex:

C + P SmartLockers are highly flexible.

If you have 100 employees, you need 100 security compartments, right? Wrong. If you're on a customer visit, on vacation, sick, or working from home, you don't need a compartment. With a C + P SmartLocker, you only need compartments for the maximum number of employees that are in the building at any given time. These can be different people from one day to another, as you can easily reprogram the compartments from your desk. We call this flexible usage. The configuration options for compartment layouts are also extremely flexible. Whether it's XS, XXL, or something in between—only C + P allows you to put together your own unique combination.

Take up no more space than you need: SmartLockers in hospitals, doctor's practices, etc.



Magic number 7—your advantages at a glance:

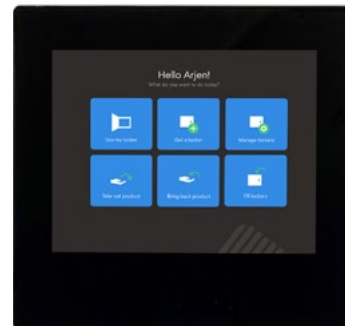
- + Save space: no need for a compartment for every single staff member
- + Customizable: modular system can be flexibly configured to suit your needs
- + Depth: cabinets and add-on units are available in two depth variants
- + Convenience: individual cabinets can be placed side by side to form a wall unit
- + Versatile uses: for social spaces, non-contact handovers, staff mail, as a meeting point, etc.
- + Design: can be customized in many ways, so it can be an eye-catching feature on your premises
- + Expansion: apart from SmartLockers, we offer a range of great room solutions

My compartment today, yours tomorrow: C + P SmartLockers can be used by everyone

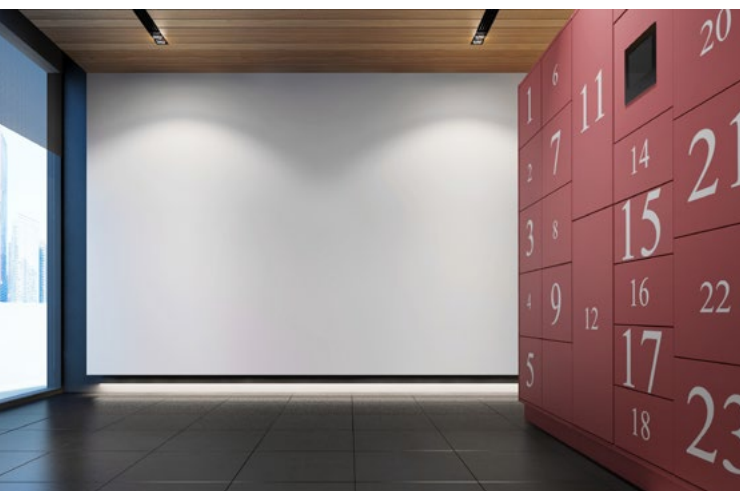
Abracadabra:

C + P SmartLockers are extremely versatile.

The key is that there is no key. No object that can get lost and that anyone could use. Instead there are a variety of access options, such as the app, a PIN, or RFID transponder, that can only be used by you or by the person you assign. It is highly likely that your SmartLocker will be handled with care, as you can precisely trace every time the SmartLocker is accessed. If force is ever used, however, the administrator is sent a notice. On top of this, our steel is highly robust and has an anti-theft design with no vulnerable points that can be accessed from the outside. C + P SmartLockers can also be equipped with a camera on the top of the cabinet.



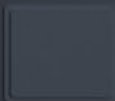
The screen can be used to open the compartments and to provide information on the content



A strong presence at any exhibition: SmartLockers in museums, at trade shows, etc.

Magic number 7—your advantages at a glance:

- + Access options: no keys that can be used by unauthorized persons
- + Traceability: removals can be traced to a specific time and person
- + Material quality: especially robust steel that can withstand major attacks
- + Design: no vulnerable points that thieves can use to force the compartment open
- + Communication: C + P SmartLockers can send warning messages to administrators
- + Weatherproof: outdoor variant is particularly UV-resistant and water-repellent
- + Video monitoring: surveillance camera can be fitted to the top of the cabinet





Works like magic:

C + P SmartLockers are carefully thought out.

Being smart means always having a plan B and being prepared for all eventualities. Power failures, for example: even when everything around it has stopped working, a C + P SmartLocker can always be unlocked mechanically with its emergency opening function, to enable important items to be removed. And because all its other functions are electronic, there is no problem with wear in the locks, which improves their longevity tremendously. After all, a magic trick is only perfect if it can be repeated again and again. Our cabinets are also well-prepared for your international employees: the menus are available in multiple languages.



The mechanism for the emergency opening is located on the top of the cabinet in a well-concealed place



Teaching kids to count at the same time: SmartLockers in schools, day-care centers, etc.

Magic number 7—your advantages at a glance:

- + Independence: the door can be opened even in a power failure
- + No friction: no keys for longer lock service life
- + Operability: the cabinet does what it's supposed to—thanks to intuitive, well-structured menus
- + All-inclusive service: C + P gives you everything from a single source: cabinet, software, support
- + Experience: the SmartLocker is the product of 100 years of steel cabinet know-how
- + Logistics: with our Europe-wide network, we are on hand to help across borders
- + Made in Germany: more than just where something comes from—a benchmark for quality

Encore:

for all those who
want even more.

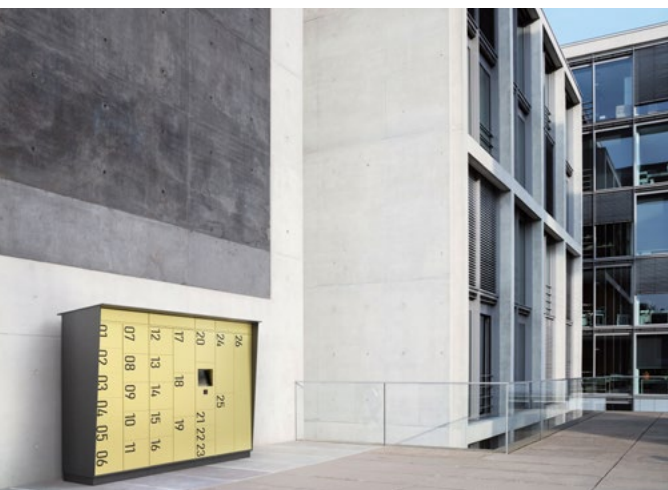


Whatever the weather: special
equipment for outdoor areas

The descriptions on the previous pages by no means cover all of the tricks that our cabinets have at their disposal. What about a spectacular outdoor performance, for example? C + P Smart-Lockers are also available in weatherproof special designs for use outdoors. Or what about a high-quality camera on the top that carefully records everything that goes on in front of the cabinet? This is also part of its extensive repertoire. Perhaps you want to make sure that everything adds up at the end of the day—or you love chilled treats? We can provide both a payment function and a chill function. Much like a C + P SmartLocker after correct authentication, we are fully open—to any special requests.

Optional extras:

- + Chill function (cool box required)
- + Video camera (on cabinet top)
- + Payment function (e.g. for snack box)
- + Compartment rental (e.g. for office next-door)
- + Outdoor equipment (with phenolic HPL + stainless steel drip edge)



Outdoor C + P SmartLocker:

- + Housing with UV-resistant varnish
- + Encased all the way round with special phenolic HPL material
- + Stainless steel base (not varnished)
- + Top structure made from special phenolic HPL material, protruding on all sides with milled groove
- + All compartments are water-repellent thanks to the stainless steel drip edge



Some like it cold—with the right accessories you can be served up a treat



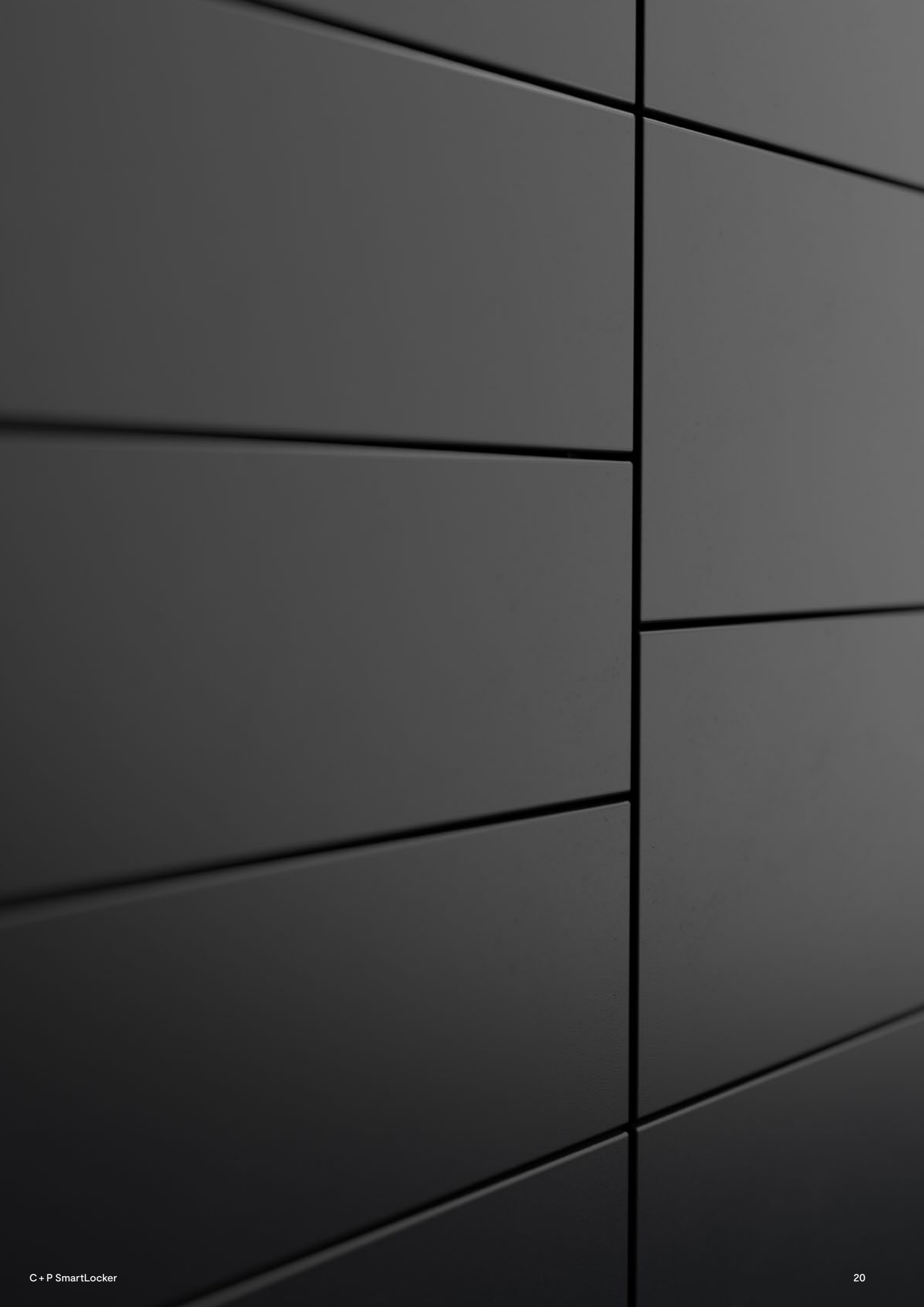
With its pay function, C + P SmartLockers can handle complex transactions

The optional camera ensures that users stay on their best behavior



Is there anything you need from your future locking system that isn't shown here? We can also produce unique custom solutions. Get in touch. The C + P team looks forward to receiving your call or email:

+49 (0)6465 919-350
smartlocker@cp.de





Prefino with face-fitted front for an especially high-quality look

The great magician: Prefino S 7000.

Our top model Prefino has simply got "it:" that special aura you need to leave a powerful impression wherever you are. Its face-fitting front that conceals the entire housing when viewed head on has never failed to have the desired effect. The housing is also electrolytically zinc-plated and cannot rust. You could almost say that has found the magic spell for eternal youth. And while it already looks prestigious enough, you can top off its performance with the optional wood decor. Its skilled tricks also include double walls for greater stability and a doorstop silencer for outstanding closing characteristics. And with its body height of 1950 mm, it is veritably one of the greatest. A master of all its compartments.





Evolo with flush-edge front
for individual and captivating
color contrasts

The master's apprentice: Evolo S 3000.

When it comes to talent, Evolo is no less impressive than its teacher. Furthermore, its extremely torsion-resistant doors and special profile make it especially stable and tamper-proof. For a beginner in the subject of smart magic, it is also tremendously independent, with its own ventilation system, for example. This means that heavy-duty work clothes stored inside it feel splendidly comfortable. Its high-quality enamel coating protects it from evil outside forces, and thanks to its cleaning-friendly hole pattern it looks new even after the most demanding performances. Evolo is also fully trained in the art of accounting. With its excellent value for money, it quickly reveals its advantages over other systems.

You shouldn't reveal
your tricks.

But we're always willing
to answer your practical
questions.

FAQ about

C + P SmartLockers:

What can I keep in my C + P SmartLocker?

In principle, whatever you like. Our customers generally store objects that have a particular value, such as laptops, tablets, or high-quality tools. But work clothing and sports equipment can also be stored away very comfortably.

How large are the cabinets and compartments?

The cabinets are generally 1.95 m or 2.10 m tall, 40 cm or 80 cm wide, and 50 cm or 60 cm deep (depending on series). For the compartments, you can choose between the following door heights: XS (14.7 cm), S (22.2 cm), S/M (29.7 cm), M/S (35.7 cm), M (44.7 cm), L (59.7 cm), XL (89.7 cm), and XXL (1.79 cm) (depending on series).

What do I need to know about connecting the system?

Each compartment needs roughly 1 watt of current, and the display and mini controller need roughly 100 watts. The latter work via 4G, WIFI, or LAN as standard. If no display is included, you will need a LAN network (or optionally 4G).

How do I start up the SmartLocker?

The locker is a plug and play system. This means that you simply connect it to the power supply, connect to the network, and you're done. For the administration of the cabinets, we offer remote training for your employees—but we can also visit you in person if you would like. Depending on your contract, you can also make use of our first-level support for any questions you may have. And now things will get a little technical, but IT people will understand: various IT services can be booked as options (API, integration, use case with process flow).

How can users operate the compartments?

There are various smart options for this: either by using a display integrated into the cabinet, an 8-inch monitor, a QR code reader (with PIN code), or user app via the stationary mini controller. Whatever you prefer.

How is user administration organized?

You have a range of convenient options to choose from. Administration is very straightforward and uses cloud-based software that fulfills all legal requirements (GDPR / ISO 27001 / pen test / Microsoft Azure security standards). Personal data can be imported as a CSV text file, for example. An on-demand interface that matches your requirements is also possible (e.g. connection to an ERP system).

How are C + P SmartLockers delivered?

Apart from outdoor systems, the cabinets are fully pre-assembled and are delivered with an 18-meter truck. Additionally, we are happy to help if you have any special delivery requirements. Simply get in touch so that we can find the best solution together.

Where do you deliver the cabinets?

Delivery to your loading ramp/curbside is standard. Optionally, you can also arrange other contractual agreements with us. We will then deliver in accordance with your needs.

Who will assemble the cabinets on my premises?

We will gladly take care of this for you. Simply select delivery to the place of use with professional assembly by our service staff instead of standard delivery. We will then fully set up and wire the cabinet systems and hand them over to you ready for operation.

Will I be informed of the delivery time?

Of course. We will keep you up to date on exactly when your new C + P SmartLocker will be arriving. To do this, we will, of course, need your correct contact details with delivery address and email address. And if something comes up that makes things difficult, simply let us know and we'll find an alternative.

Do you have any questions that weren't answered here? Then get in touch. The C + P team looks forwarding to receiving your call or email:

+49 (0)6465 919-350

www.cp.de/smartlocker

What seems effortless is the product of years of experience.



At C + P, our mission was always to redefine the “professional cabinet”

For almost 100 years, C + P has built steel cabinets for professional use that are both attractive and robust. Our principle has always been to offer complete systems, rather than just individual elements. This has enabled us to garner sufficient experience to go the next step and also make the cabinets smart. We have made this decision as we have recognized our customers' need to make irritating or cumbersome workflows simpler. We make a point of supplying everything from a single source, and our SmartLockers are no exception. Not only do the cabinet systems come from C + P, but also the corresponding software and the technical support. Our material of choice, steel, is particularly sustainable, as it has an extremely long service life and can be recycled. And the best made in Germany production quality ensures that everything runs smoothly.

Are you interested in our C + P Smart-Lockers? Then get in touch. The C + P team looks forward to receiving your call or email:

+49 (0)6465 919-350
smartlocker@cp.de

General information:

This publication is for information purposes only. It is not an offer in the legal sense and is intended exclusively for business customers. All items are supplied without the decorations that may be shown. The brand and product rights of any branded articles recognizable in the decorations are held by the respective manufacturer. The dimensions given are approximate and may vary upwards and downwards. We reserve the right to make design changes, changes to the product range and the ability to deliver, changes to the color, fabric and decoration palettes and, if necessary, limited express availability (e.g. in the case of larger quantities per model or order). We also reserve the right to make changes to price quotations, e.g. due to errors, increases in material or raw material prices. Our General Terms and Conditions apply (see www.cp.de/agb).

Issue: 2023/04 - Valid from 01.04.2023 until a new issue is published.

Publisher / Copyright: C + P Möbelsysteme GmbH & Co. KG - www.cp.de

**“My brain is the key
that sets me free.”**

Harry Houdini

Magician and escapologist

C + P Möbelsysteme GmbH & Co. KG
Boxbachstr. 1
35236 Breidenbach
Germany

T +49 (0)6465 919-350
smartlocker@cp.de
www.cp.de/smartlocker

