





What we offer.

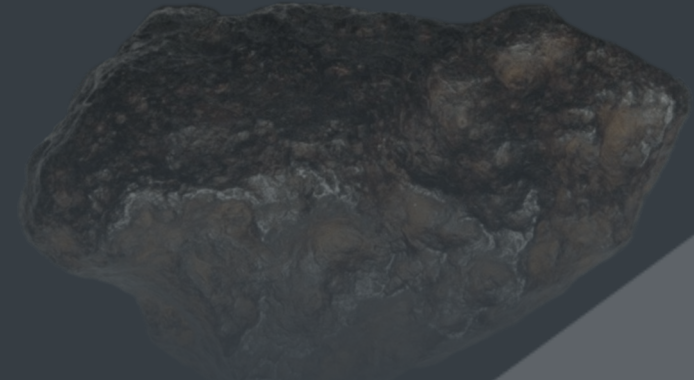
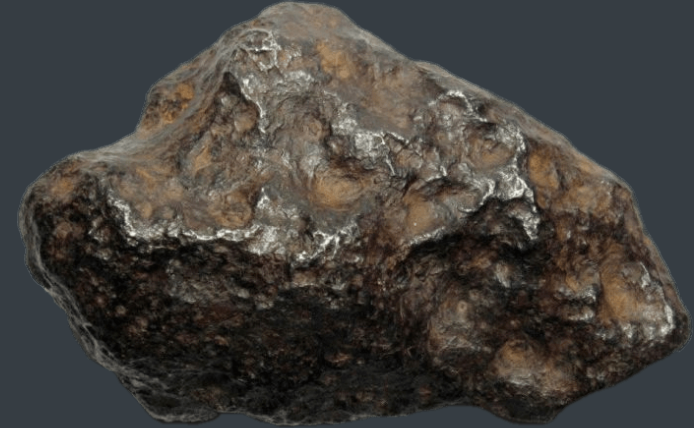
“Steel is in our DNA.”

"Steel – an authentic, natural material valued for centuries and equipped with unique material properties. Steel stands for strength, high resilience, robustness and malleability."

Steel as a material: A sustainable all-rounder!

Steel forms the basis of all our products. After all, no other material has so many positive attributes when it comes to the stability, design and value retention aspects of storage furniture.

In addition, steel makes an important contribution to resource conservation. The material can be melted down again and again without any loss of quality and processed for new purposes. Incidentally, in Germany, almost half of all steel is now produced from this secondary raw material.



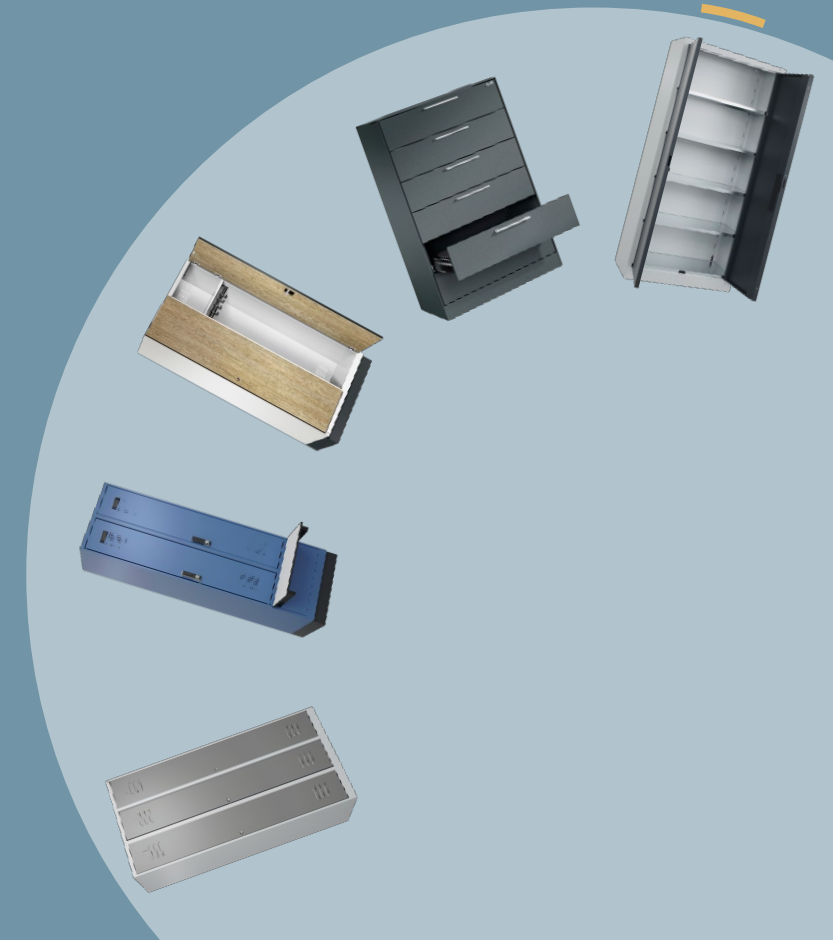


What we offer.

C + P Der Stahlschrank.

The original since 1925.

The company Christmann + Pfeifer (C + P) was founded in 1925 in Breidenbach, Hessen – in existence now for almost 100 years. In addition to the company's headquarters, today C + P's production sites also include the plants in Gotha in Thuringia and Legnica, Poland.





What we offer.



Acurado workshop cabinets:

Store tools and equipment correctly.

Whether workshops, the industrial sector or any other technical premises – with the right tool cabinet you can bring more order and safety into your day-to-day work!

Correctly sorting and organizing your equipment and tools can help increase the efficiency of your workflows – even where heavy equipment is involved.

With C + P workshop and steel lockers, we offer you the best quality, professional advice and reliable assembly.





What we offer.



Asisto office cabinets:

Steel strength and flexibility in the office

Asisto by C + P is a leading product in all areas of modern office furniture and also offers added value that's as strong as steel – in quality you'll only get with C + P.

That's because the Asisto cabinets with their innovative steel body impress in everything from technology and design to cost effectiveness. Asisto is the intelligent complete range from the market leader in steel furniture.





What we offer.



Cambio:

The highly customizable steel locker.

This elegant locker range is in a league of its own. The high-quality lockers from the Cambio series are suitable for special requirements and fit harmoniously into a wide variety of rooms thanks to their highly customizable features.

Common areas of use include gyms and spa centers, swimming pools, medical facilities, but also commercial changing rooms.





What we offer.



Evo PLUS:

For industry, fitness, wellness and sport.

Lockers from the Evo series are used primarily in modern industrial changing rooms.

With their attractive design, they are also often used as furniture in changing rooms in gyms, sports halls, swimming pools and wellness areas.

Arranged in a row, several Evo steel lockers create a harmonious overall picture, thanks to their slender, narrow sides.





What we offer.



Classic PLUS:

The classic locker.

The classic industrial locker is now well established in countless areas in addition to its traditional uses and has raised the bar when it comes to standard features.

Take for example the safety twist bolt, which rotates when locked and prevents it from breaking open by overtightening.

Speaking of burglary resistance: don't be satisfied with anything below class B, the second highest break-in class under DIN 4547-2.





What sets us aside.



Less is more!

BIONIC Steel Frame

For the new PLUS steel locker range, C + P has developed a design that sets new standards in terms of stability and resource conservation. The models in the series are specifically reinforced at crucial points and have a sophisticated structure of folds, struts and spaces inside – similar to the leaves of a tree. The effect? Increased torsional rigidity alongside less raw material and resource consumption.





What sets us aside.



Color at its most vibrant

The C + P color concept

Gray on gray was yesterday. Modern design is all about literally injecting color into company premises, schools, doctors' surgeries and the like – be it by means of an eye-catching steel locker decorative fronts or color-contrasting furniture. Find the perfect color concept for you with C + P furniture systems today.



Der Stahlschrank.



What we offer.

Responsibility for people and the environment



Quality management (ISO 9001)



Energy management (ISO 50001)



Environmental management (ISO 14001)

- + Production in the heart of Europe in compliance with high social standards
- + Durable and recyclable products with a service life of several decades
- + Minimization of packaging material with special in-house logistics service
- + Environmentally friendly coatings thanks to low-solvent and low-emission coating process
- + Ongoing customer relationships thanks to the highest reliability and quality





What we offer.



Logistics with Service PLUS

C + P's own logistics service. With 40 of its own trucks and 80 furniture trailers in total, it ensures the punctual delivery of our steel furniture reliably, safely and in an environmentally conscious manner.



Reliable and punctual

C + P's own logistics department plans our deliveries centrally, customer-oriented and as quickly as possible. Direct shipping means there is no need for any reloading.



Safe and secure

Thanks to our specially developed loading system, our products are completely protected from any damage during shipping.



Comprehensive services

As standard, we supply our customers directly, to schedule and free of charge. This also includes advance information about the exact time of delivery.



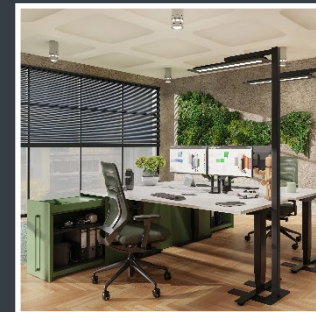
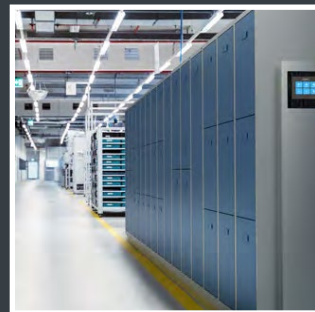


Our services.



Optimal solutions for EVERY sector

Thousands of specialist retailers, companies and institutions around the world rely on C + P'd furnishing solutions – from craft enterprises to large industrial corporations.



- + Industry & trades
- + Banks & insurance
- + Police/fire service/technical relief service
- + Hotels & catering
- + Kindergarten & schools
- + Self-employed & freelancers
- + Hospitals & medical practices
- + Sports facilities & swimming pools
- + Construction companies
- + Amusement & holiday parks
- + Universities & higher education facilities
- + Transportation & logistics
- + Transport companies
- + Public administration & authorities
- + Retail & services





Our services.

Testimonials

Whole spatial concepts or individual furniture – C + P is an expert with many years of experience. Satisfied customers include UCLA in California, the University of Oregon as well as the Bucharest Thermal Baths and Tropical Island. Just have a look!

Therme
Bukarest



Teamhaus Soennecken
Overath



Sparkasse
München



GÜNTHER Heisskanaltechnik
Frankenberg



Gefahrenabwehrzentrum
Gießen





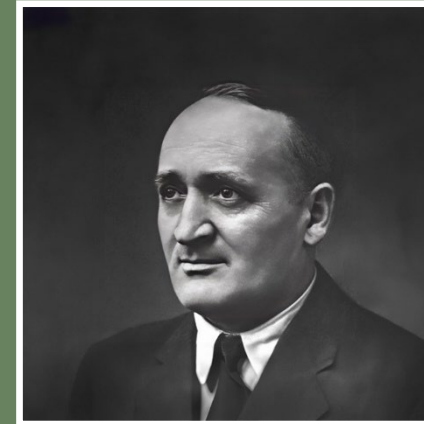
Where we come from.



C + P Der Stahlschrank.

From the region, for the region.

The company, founded by Wilhelm Christmann and Otto Pfeifer in 1925, had its origins in a Wallau blacksmith's shop/locksmith's shop that produced sheet metal parts and building fittings. It wasn't long before a move to the larger area on the B253 between Breidenstein and Breidenbach at the junction to Wiesenbach was on the agenda, where steel hall construction became a core product.



Wilhelm Christmann



Otto Pfeifer

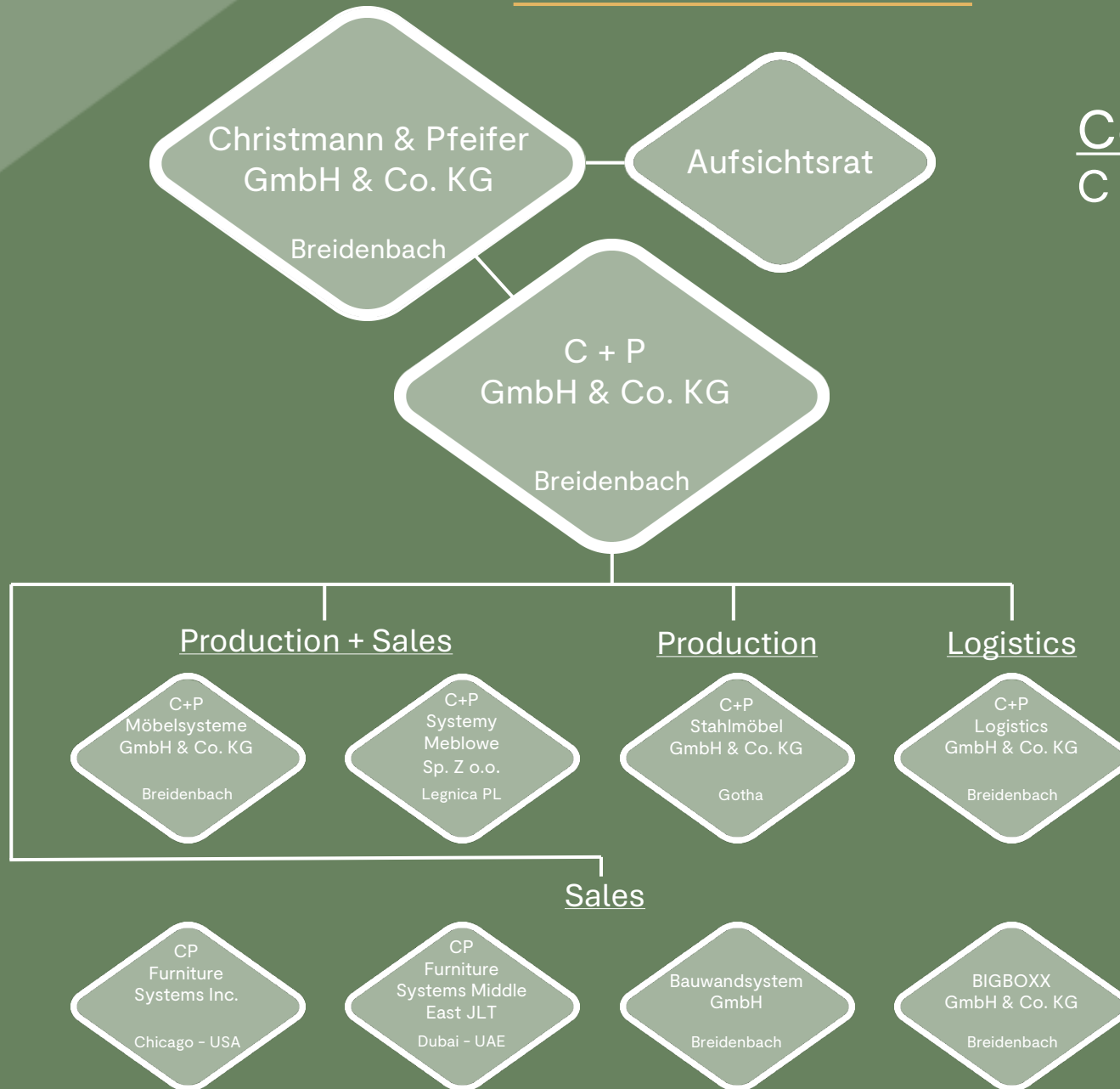




Where we come from.



Company structure C + P EINRICHTEN





Where we come from.



Management of C + P over time



Tomas Kirschenfauth

Managing partner
2018 - today



Uwe Hainbach

Managing partner
1990 - 2018



Horst Hainbach

Managing partner
1975 - 1991





Where we come from.



C + P locations



Breidenbach



Gotha



Legnica





Who we are.



C + P in figures:

- + Founded in 1925
- + Employees in fitting division approx. 600
- + Production sites Breidenbach (Hessen)
Gotha (Thuringia)
Legnica (Poland)
- + Sales Worldwide
- + Production capacity More than 100 truckloads leave the plants every week
- + Material volume More than 1,000 tons of steel are processed by the plants every month
- + Orders More than 65,000 ordered processed by C + P in a year – from individual furniture items right to the full furnishing of major projects
- + USP Specialist and market leader





Who we are.

C + P Team

Our company is firmly rooted in three locations – Breidenbach, Gotha and Legnica, where around 650 people work towards one goal: our joint success.

Working hand in hand

Our team works day in, day out with the utmost commitment to find the best solutions and the best products for our customers.

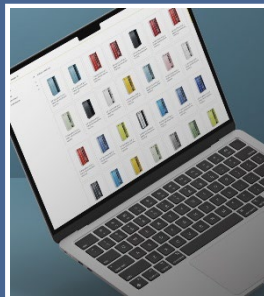




How we work.



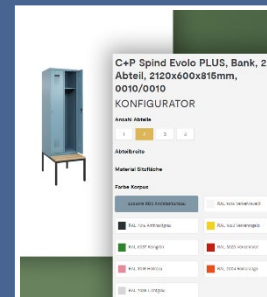
C + P The shop



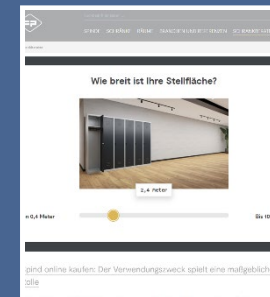
Intelligent search



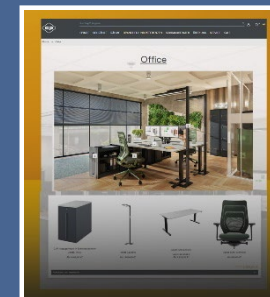
Individual quotes + discounts



Inspiring configurator



Innovative locker guide



Concept-rich spaces





How we work.



The added value we offer our customers



Online shop



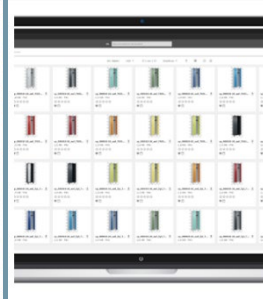
Brochures



Catalog



Sales team



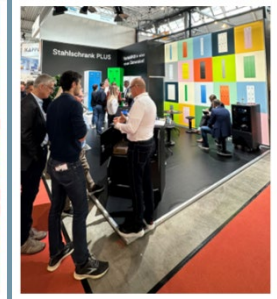
BMEcat/image
database



pCon/OFML



Retailer search



Trade fairs





Stay in touch.



Sales management
Marketing &
E-Commerce



Head of Marketing



Sales management
Specialized trade



Sales management
Internal Sales &
Customer Service

